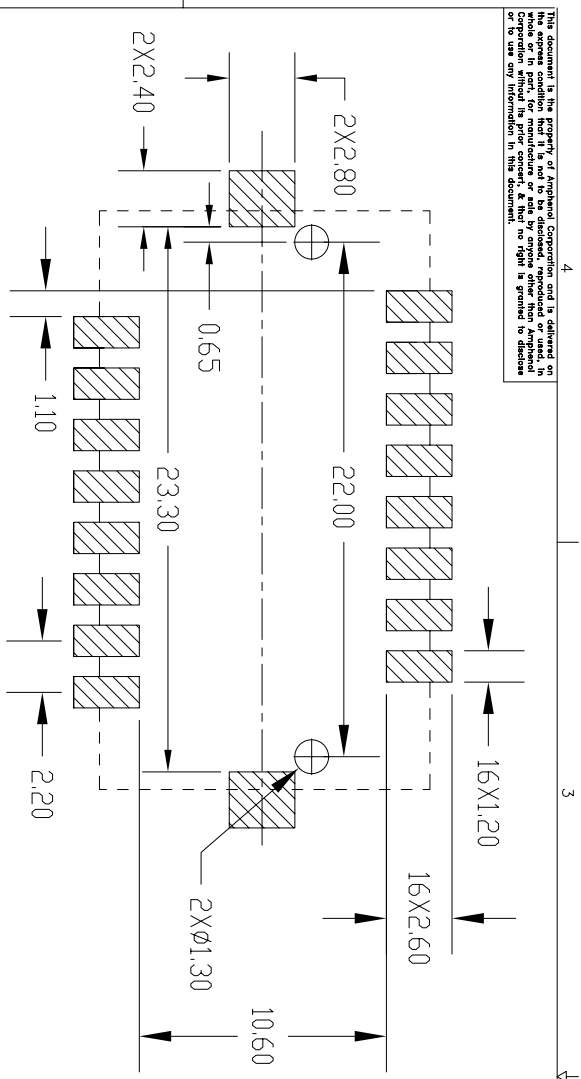
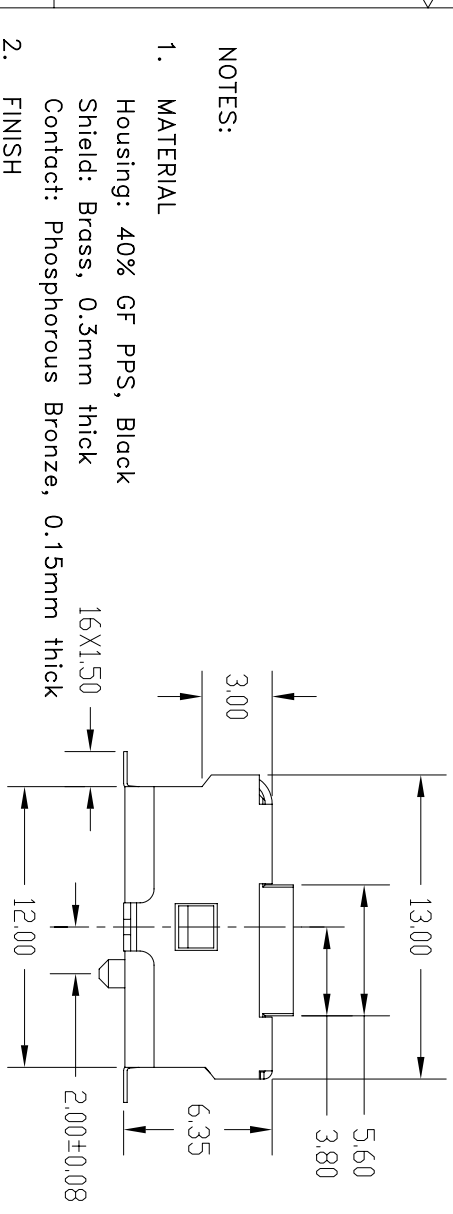
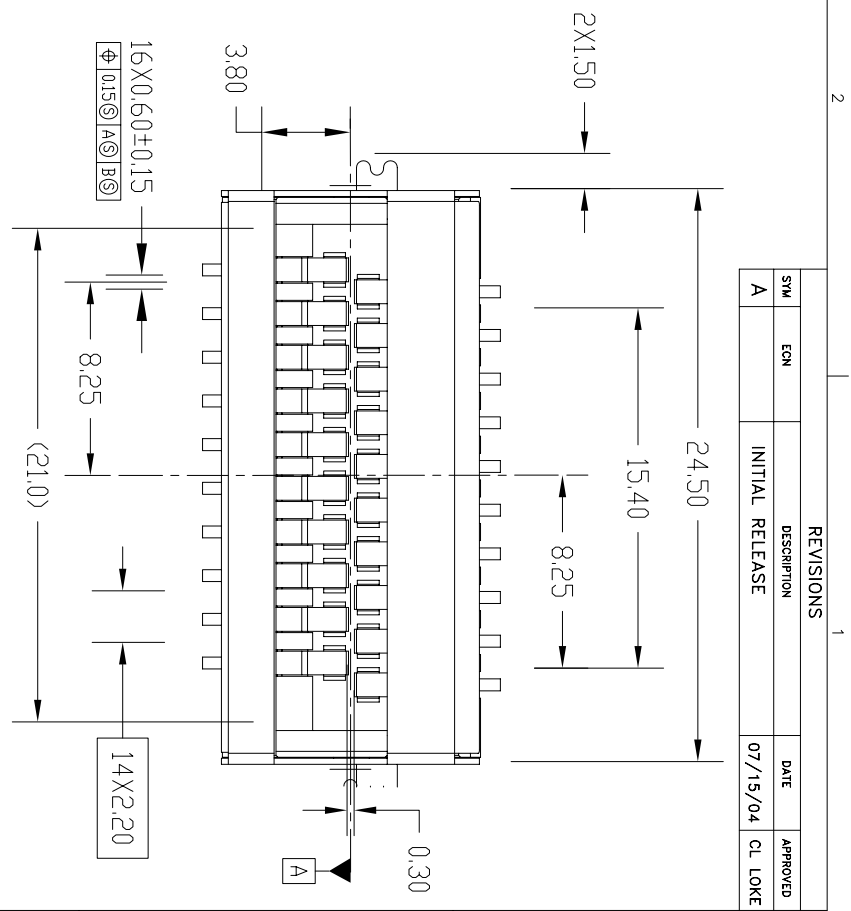


This document is the property of Amphenol Corporation and is delivered on a loan basis. It is to be used for the manufacture of the product specified herein. It is not to be reproduced, stored in a retrieval system, or transmitted in any form or by any means, electronic, mechanical, photocopying, recording, or by any information storage and retrieval system, without the prior consent of Amphenol Corporation. Amphenol Corporation and its subsidiaries are not responsible for any errors or omissions in this document. All dimensions are in millimeters unless otherwise indicated.



RECOMMENDED PCB LAYOUT



- NOTES:
- MATERIAL**
Housing: 40% GF PPS, Black
Shield: Brass, 0.3mm thick
Contact: Phosphorous Bronze, 0.15mm thick
 - FINISH**
Shield: 50u" Ni plate all over
Contact Area: 15u" Au plating over 50u" Ni
Contact/Shield Solder Tail: Au flash over Ni
 - PACKAGING:** Tape and Reel
 - All PCB layout tolerance ± 0.05 unless stated otherwise

CUSTOMER DRAWING

REVISIONS		DATE	APPROVED
SYM	EON	DESCRIPTION	
A		INITIAL RELEASE	07/15/04
			CL LOKE

UNLESS OTHERWISE SPECIFIED TOLERANCES		MATERIAL AND COLOR	
U.S.	METRIC		
.X	+/-		
.XX	+/-		
.XXX	+/-		
FRACTIONS	+/-		
ANGLES	+/-		
FOR MATERIALS AND FINISHES SEE REMOTE SHARP EDGES		FINISHES	
DIMENSIONS		DRAWING FILE:	
U.S.	INCHES	ANGLE OF PROJECTION	
(METRIC)	(MM)	FIRST ANGLE	
APPROVAL		DATE	
DRAWN	VIVIANE 07/15/04		
CHECKED	CL LOKE 07/15/04		
CHECKED			
TITLE		Amphenol	
BTB DETACH SOCKET		Amphenol East Asia Limited Manufacturing Operation	
16 PIN			
SIZE	DRAWING NO.	SCALE	
A4	SBB-8116-110	NONE	
REV.	A	SHEET 1 OF 1	