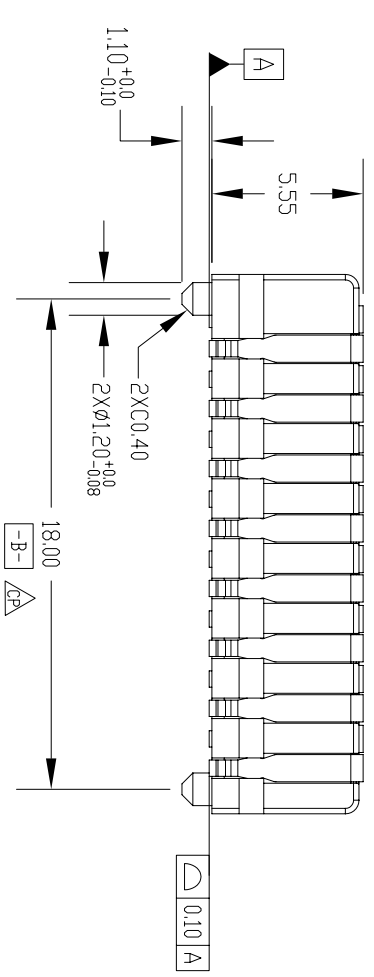
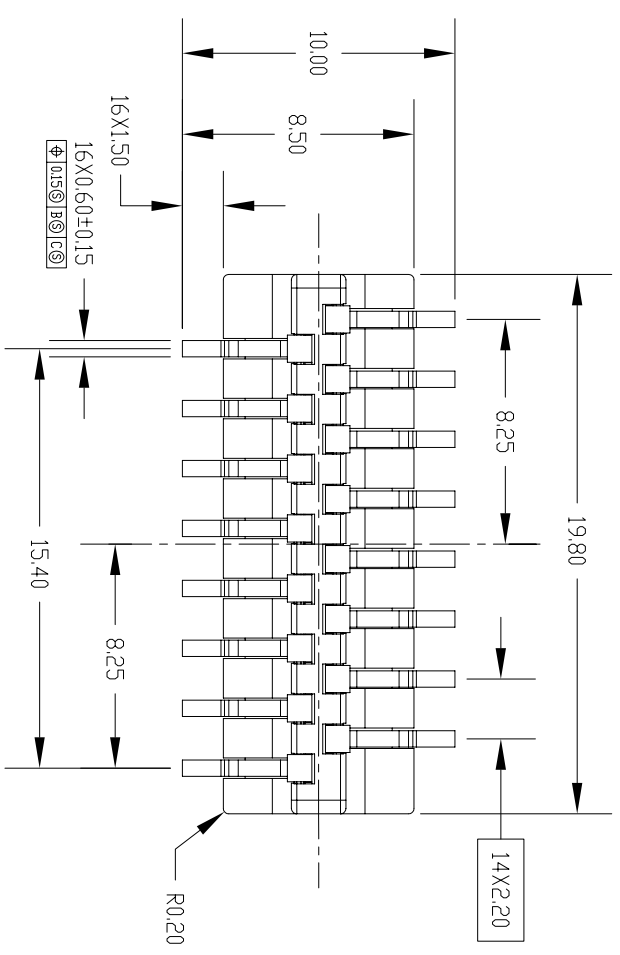
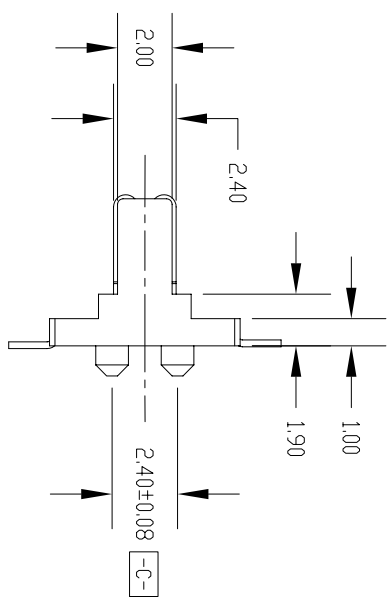


This document is the property of Amphenol Corporation and is delivered on the express condition that it is not to be disclosed, reproduced or used, in whole or in part, for any purpose other than that intended by Amphenol Corporation without the prior consent, & that no right is granted to disclose or to use any information in this document.



CUSTOMER DRAWING

REVISIONS		DATE	APPROVED
1	INITIAL RELEASE	07/15/04	CL LOKE



NOTES:

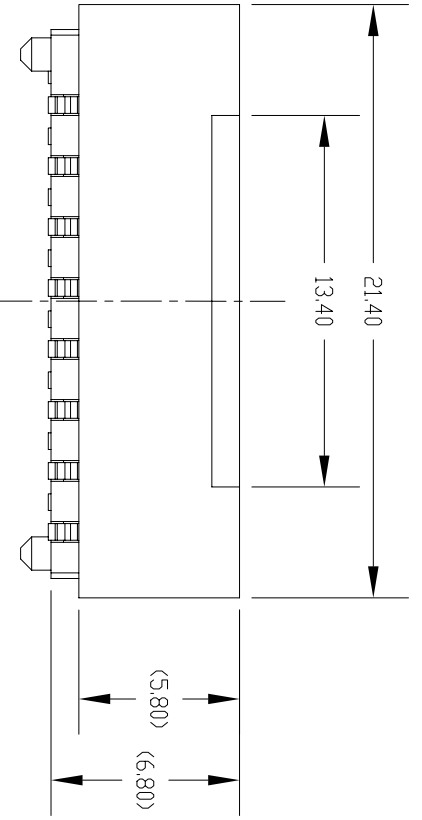
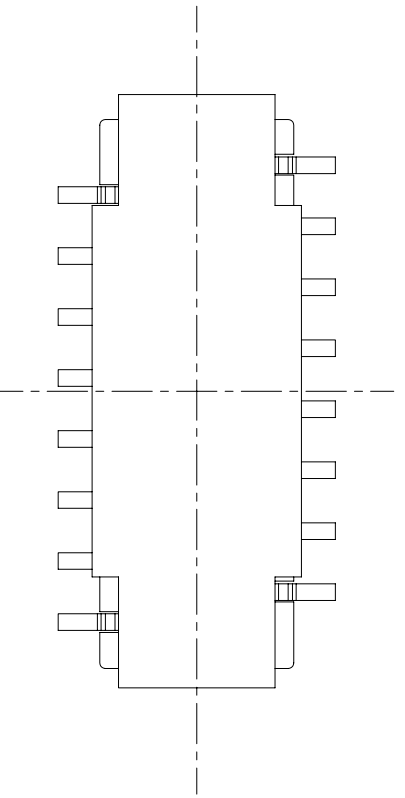
- MATERIAL**
Housing: 40% GF PPS, Black
Contact: Phosphor Bronze, 0.25mm thick
Cap: 40% GF PPS, Black
- FINISH**
Contact Area: 15 u" Au plating over 50u" Ni
Solder Tail: Au flash over Ni
- PACKAGING:** Tape and Reel
- All PCB layout tolerance ±0.05 unless stated otherwise

UNLESS OTHERWISE SPECIFIED		APPROVAL		DATE	
TOLERANCES		DRAWN	VIVIANNE	07/15/04	
U.S.	METRIC	CHECKED	CL LOKE	07/15/04	
.X	+/-	DRAWING FILE :			
.XX	+/-	ANGLE OF PROJECTION			
.XXX	+/-	TITLE			
FRACTIONS	+/-	BTB DETACH PLUG			
ANGLES	+/-	16 PIN			
SEE NOTES		SIZE		DRAWING NO.	
REMOVE SHARP EDGES		A4		SBB-8116-210	
DIMENSIONS		SCALE		NONE	
U.S.—	INCHES—	SHEET		1 OF 2	
(METRIC)	(MM)			REV. A	

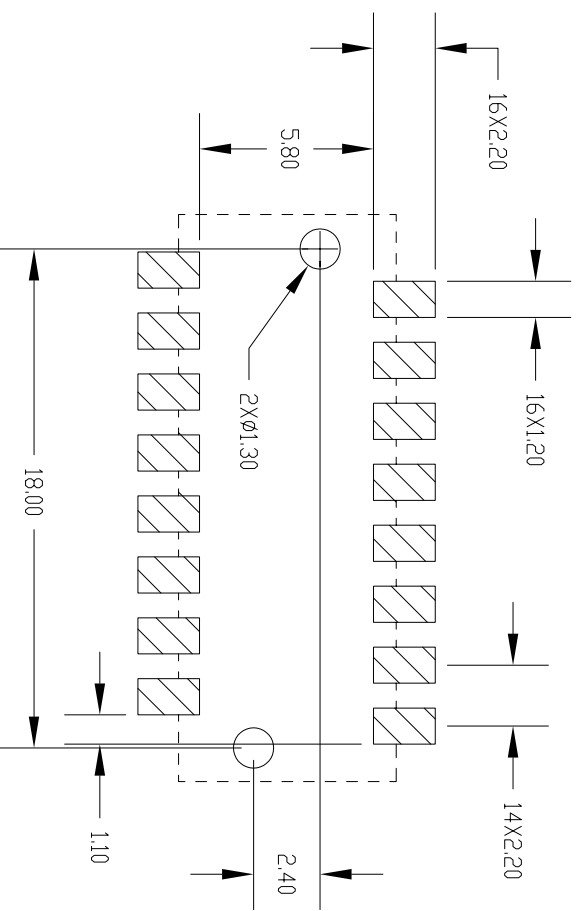
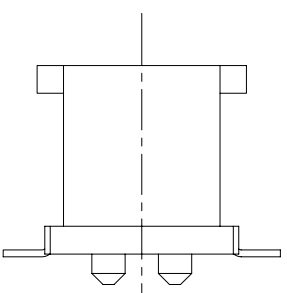
Amphenol

Amphenol East Asia Limited
Manufacturing Operation

This document is the property of Amphenol Corporation and is delivered on the express condition that it is not to be disclosed, reproduced or used, in whole or in part, for manufacture or sale of a product other than approved in writing by Amphenol Corporation. The user shall indemnify and hold Amphenol Corporation harmless from or to use any information in this document.



CAP CONSTRUCTION FIGURE



RECOMMENDED PCB LAYOUT

REVISIONS			
REV	DESCRIPTION	DATE	APPROVED
A	INITIAL RELEASE	07/15/04	CL LOKE

UNLESS OTHERWISE SPECIFIED		MATERIAL AND COLOR		APPROVAL		DATE	
TOLERANCES				DRAWN		07/15/04	
U.S.				CHECKED		07/15/04	
METRIC				CL LOKE		07/15/04	
X	+/-	0.20		DRAWING FILE :			
XX	+/-	0.10		ANGLE OF PROJECTION			
XXX	+/-	3°		SIZE			
FRACTIONS				DRAWING NO.			
ANGLES				SBB-8116-210			
FOR MATERIALS AND FINISHES				SCALE			
SEE NOTES				NONE			
REMOVE SHARP EDGES				SHEET 2 OF 2			
DIMENSIONS				REV.			
U.S.	INCHES			A			
(METRIC)	(MM)						

Amphenol
Amphenol East Asia Limited
Manufacturing Operation

BTB DETACH PLUG
16 PIN

CUSTOMER DRAWING