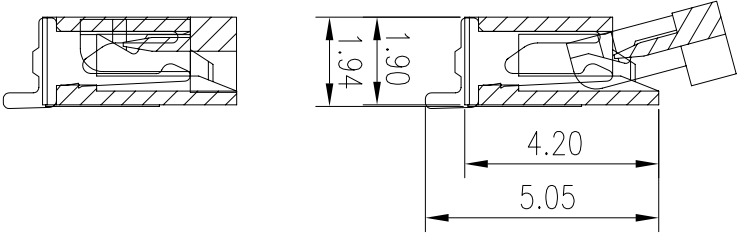
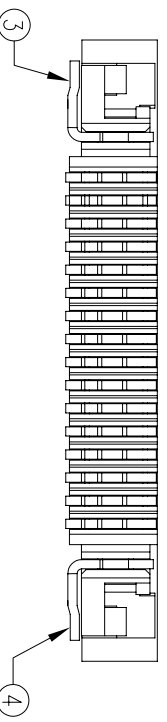
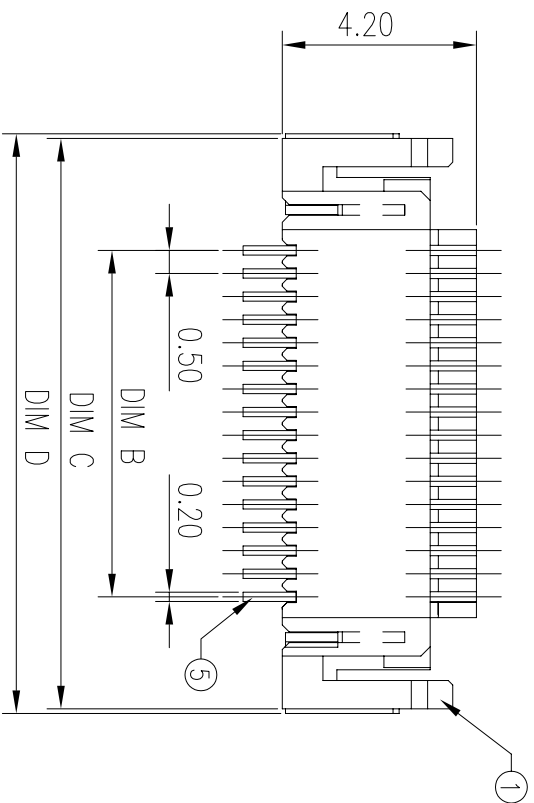
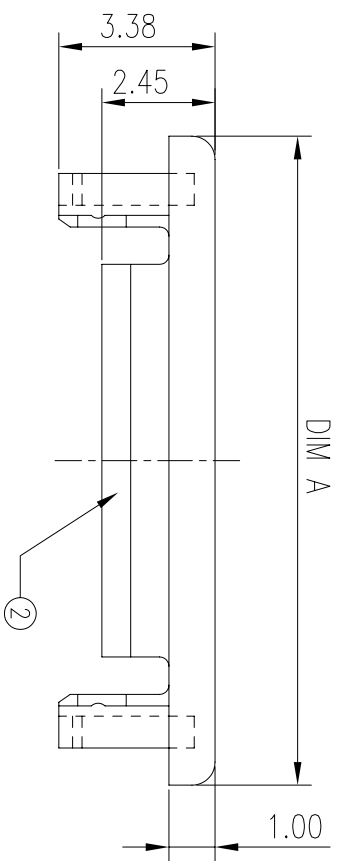
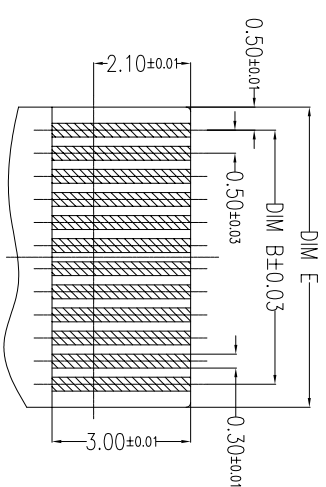


This document is the property of Amphenol Corporation and is delivered on the express condition that it is not to be disclosed, reproduced or used, in whole or in part, for manufacture or sale by anyone other than Amphenol Corporation without its prior consent, & that no right is granted to disclose or to use any information in this document.



(BOTTOM CONTACT TYPE)



FPC LAYOUT  
(THICKNESS: 0.3±0.03)

ITEM	DESC.	MATERIAL	DISPOSE	REMARKS
1	HOUSING	LCP+30%G.F		BEIGE
2	COVER	PPS		BROWN
3	SOLDER PEG	C5191-H	Sn:150u"	
4	SOLDER PEG	C5191-H	Sn:150u"	
5	TERMINAL	C5191-H	Over Ni:50u"	

1. SPECIFICATION

- Voltage Rating : 50V(DC).
- Current Rating : 0.5A .
- Contact Resistance: 20 m OHM MAX.
- Insulation Resistance: 100M OHM MIN.
- Withstanding Voltage: 500V (AC) RMS for 1 Minute
- Temperature Range : -20°C TO 85°C
- Terminal Retention Force : 3.0 N MIN.
- Fitting nail Retention Force: 1.0N MIN.

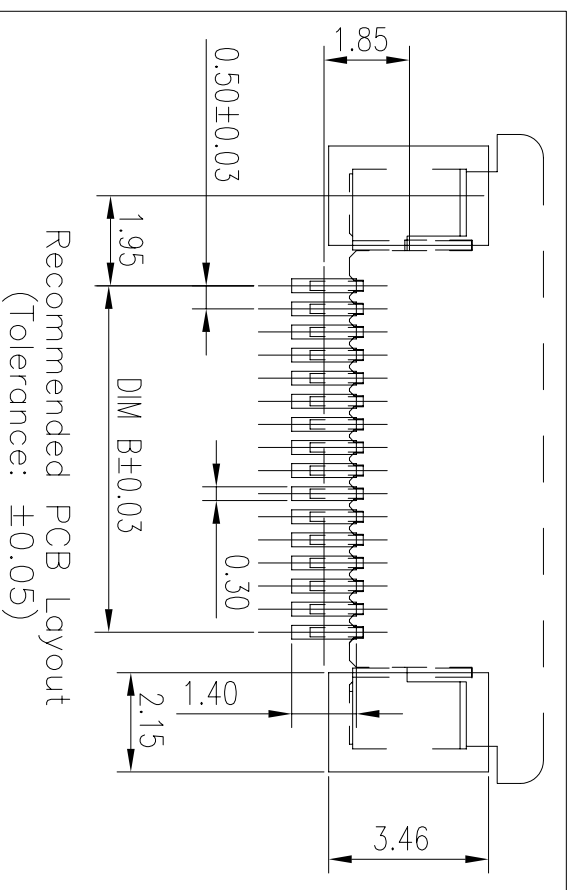
2. ORDER INFORMATION

SFPC- 051H- XX 10

NO. OF PINS (SEE TABLE 1)

DIM A	DIM B	DIM C	DIM D	DIM E	
3P	7.55	1.00	5.85	6.31	2.00
4P	8.05	1.50	6.35	6.81	2.50
5P	8.55	2.00	6.85	7.31	3.00
6P	9.05	2.50	7.35	7.81	3.50
7P	9.55	3.00	7.85	8.31	4.00
8P	10.05	3.50	8.35	8.81	4.50
9P	10.55	4.00	8.85	9.31	5.00
10P	11.05	4.50	9.35	9.81	5.50
11P	11.55	5.00	9.85	10.31	6.00
12P	12.05	5.50	10.35	10.81	6.50
13P	12.55	6.00	10.85	11.31	7.00
14P	13.05	6.50	11.35	11.81	7.50
15P	13.55	7.00	11.85	12.31	8.00
16P	14.05	7.50	12.35	12.81	8.50
17P	14.55	8.00	12.85	13.31	9.00
18P	15.05	8.50	13.35	13.81	9.50
19P	15.55	9.00	13.85	14.31	10.00
20P	16.05	9.50	14.35	14.81	10.50
21P	16.55	10.00	14.85	15.31	11.00
22P	17.05	10.50	15.35	15.81	11.50
23P	17.55	11.00	15.85	16.31	12.00
24P	18.05	11.50	16.35	16.81	12.50
25P	18.55	12.00	16.85	17.31	13.00
26P	19.05	12.50	17.35	17.81	13.50
27P	19.55	13.00	17.85	18.31	14.00
28P	20.05	13.50	18.35	18.81	14.50
29P	20.55	14.00	18.85	19.31	15.00
30P	21.05	14.50	19.35	19.81	15.50
31P	21.55	15.00	19.85	20.31	16.00
32P	22.05	15.50	20.35	20.81	16.50
33P	22.55	16.00	20.85	21.31	17.00
34P	23.05	16.50	21.35	21.81	17.50
35P	23.55	17.00	21.85	22.31	18.00
36P	24.05	17.50	22.35	22.81	18.50
37P	24.55	18.00	22.85	23.31	19.00
38P	25.05	18.50	23.35	23.81	19.50
39P	25.55	19.00	23.85	24.31	20.00
40P	26.05	19.50	24.35	24.81	20.50
41P	26.55	20.00	24.85	25.31	21.00
42P	27.05	20.50	25.35	25.81	21.50
43P	27.55	21.00	25.85	26.31	22.00
44P	28.05	21.50	26.35	26.81	22.50
45P	28.55	22.00	26.85	27.31	23.00
46P	29.05	22.50	27.35	27.81	23.50
47P	29.55	23.00	27.85	28.31	24.00
48P	30.05	23.50	28.35	28.81	24.50
49P	30.55	24.00	28.85	29.31	25.00
50P	31.05	24.50	29.35	29.81	25.50

TABLE 1



Recommended PCB Layout  
(Tolerance: ±0.05)

# CUSTOMER DRAWING

UNLESS OTHERWISE SPECIFIED		APPROVAL		DATE
TOLERANCES		DRAWN	SUN HY	04/18/05
U.S. METRIC		CHECKED	C LOKE	04/18/05
.X	+/-	DRAWING FILE :		
.XX	+/-	ANGLE OF PROJECTION		
.XXX	+/-	SEE NOTES		
FRACTIONS +/-	/	REMOVE SHARP EDGES		
ANGLES +/-	1°	DIMENSIONS		
FOR MATERIALS AND FINISHES		U.S. INCHES		
SEE NOTES		(METRIC) (MM)		
TITLE				
FPC 0.5mm PITCH				
BOTTOM CONTACT, SMT				
SIZE	DRAWING NO.	SCALE	NONE	SHEET 1 OF 1
A3	SFPC-051H-XX10	REV. B		

SYM	ECN	DESCRIPTION	DATE	APPROVED
A	---	FIRST RELEASE	01/28/02	CL LOKE
B		Amended ground peg	04/18/05	CL LOKE

REVISIONS