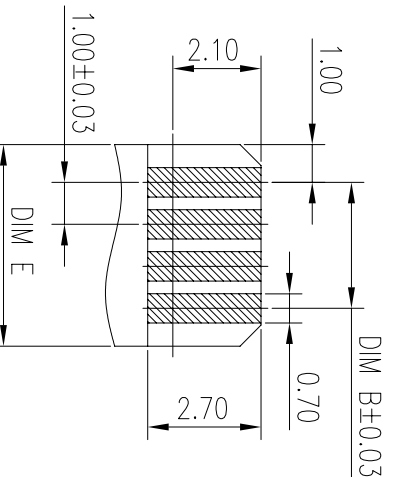
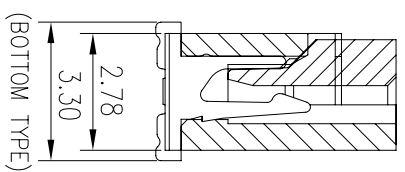
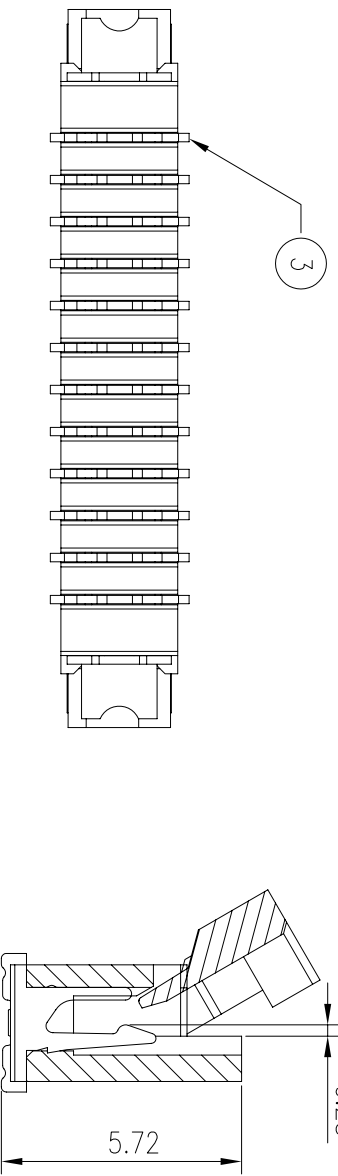
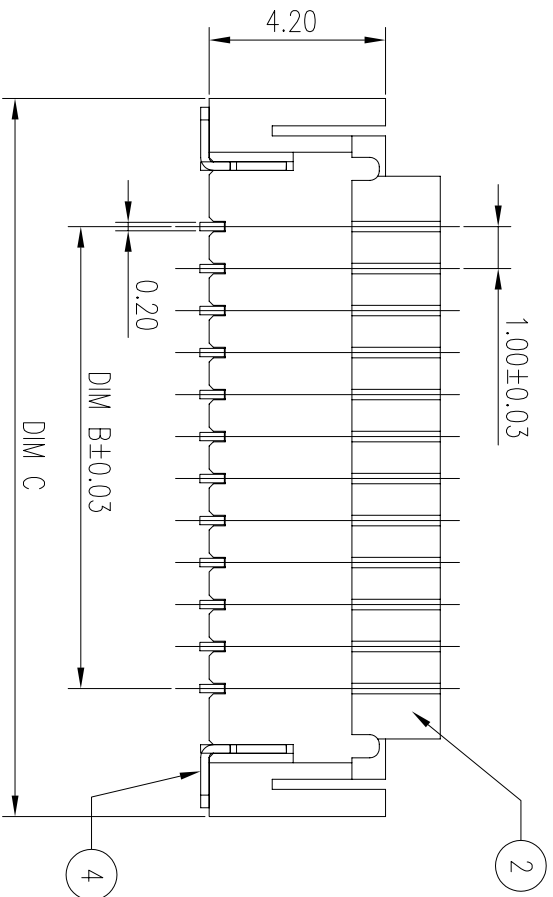
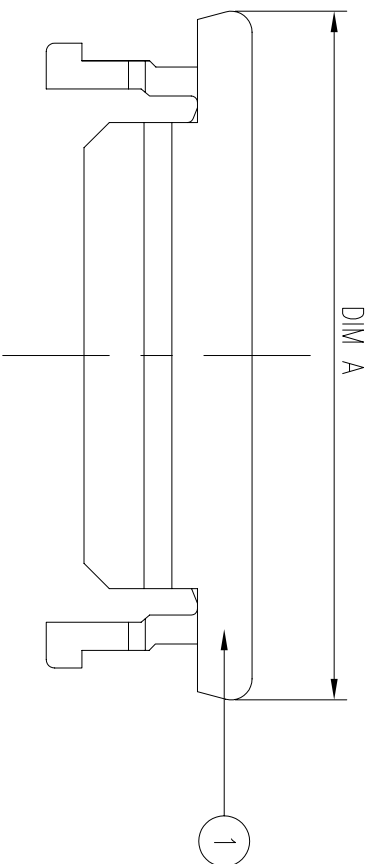


This document is the property of Amphenol Corporation and is delivered on the express condition that it is not to be disclosed, reproduced or used, in whole or in part, for manufacture or sale by anyone other than Amphenol Corporation without its prior consent, & that no right is granted to disclose or to use any information in this document.



FPC LAYOUT  
(THICKNESS: 0.3±0.03)

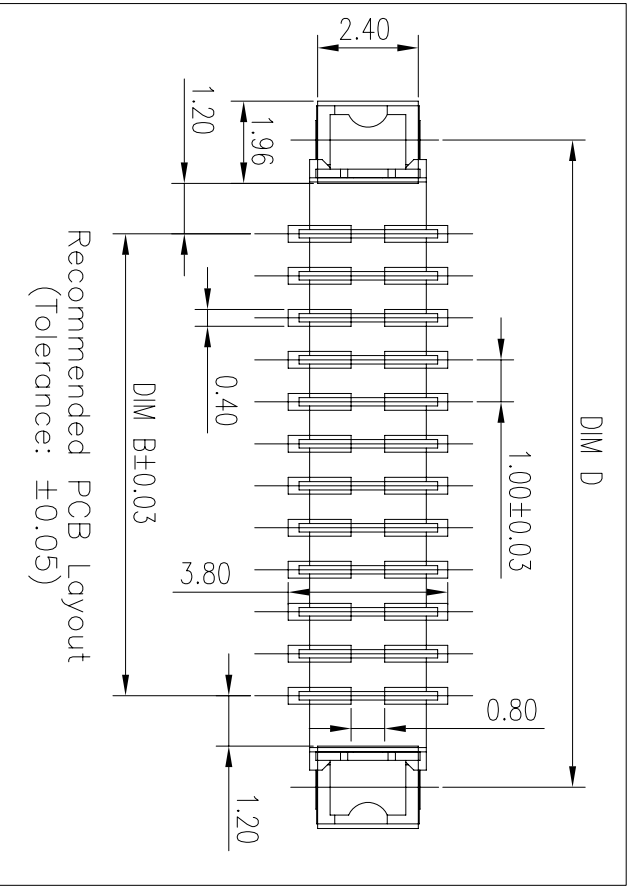
ITEM	DESC.	MATERIAL	DISPOSE	REMARKS
1	COVER	PPS		BROWN
2	HOUSING	LCP 30%GF		NATURAL
3	TERMINAL	C5191-H	Sn:100u" Over Ni:50u"	
4	SOLDER PEG	C5191-H	Sn:100u"	

	DIM. A	DIM. B	DIM. C	DIM. D	DIM. E
3P	9.40	2.00	8.10	7.17	3.80
4P	10.40	3.00	9.10	8.17	4.80
5P	11.40	4.00	10.10	9.17	5.80
6P	12.40	5.00	11.10	10.17	6.80
7P	13.40	6.00	12.10	11.17	7.80
8P	14.40	7.00	13.10	12.17	8.80
9P	15.40	8.00	14.10	13.17	9.80
10P	16.40	9.00	15.10	14.17	10.80
11P	17.40	10.00	16.10	15.17	11.80
12P	18.40	11.00	17.10	16.17	12.80
13P	19.40	12.00	18.10	17.17	13.80
14P	20.40	13.00	19.10	18.17	14.80
15P	21.40	14.00	20.10	19.17	15.80
16P	22.40	15.00	21.10	20.17	16.80
17P	23.40	16.00	22.10	21.17	17.80
18P	24.40	17.00	23.10	22.17	18.80
19P	25.40	18.00	24.10	23.17	19.80
20P	26.40	19.00	25.10	24.17	20.80
21P	27.40	20.00	26.10	25.17	21.80
22P	28.40	21.00	27.10	26.17	22.80
23P	29.40	22.00	28.10	27.17	23.80
24P	30.40	23.00	29.10	28.17	24.80
25P	31.40	24.00	30.10	29.17	25.80
26P	32.40	25.00	31.10	30.17	26.80
27P	33.40	26.00	32.10	31.17	27.80
28P	34.40	27.00	33.10	32.17	28.80
29P	35.40	28.00	34.10	33.17	29.80
30P	36.40	29.00	35.10	34.17	30.80
31P	37.40	30.00	36.10	35.17	31.80
32P	38.40	31.00	37.10	36.17	32.80
33P	39.40	32.00	38.10	37.17	33.80
34P	40.40	33.00	39.10	38.17	34.80
35P	41.40	34.00	40.10	39.17	35.80
36P	42.40	35.00	41.10	40.17	36.80
37P	43.40	36.00	42.10	41.17	37.80
38P	44.40	37.00	43.10	42.17	38.80
39P	45.40	38.00	44.10	43.17	39.80
40P	46.40	39.00	45.10	44.17	40.80
41P	47.40	40.00	46.10	45.17	41.80
42P	48.40	41.00	47.10	46.17	42.80
43P	49.40	42.00	48.10	47.17	43.80
44P	50.40	43.00	49.10	48.17	44.80
45P	51.40	44.00	50.10	49.17	45.80
46P	52.40	45.00	51.10	50.17	46.80
47P	53.40	46.00	52.10	51.17	47.80
48P	54.40	47.00	53.10	52.17	48.80
49P	55.40	48.00	54.10	53.17	49.80
50P	56.40	49.00	55.10	54.17	50.80

TABLE 1

- SPECIFICATION**  
Voltage Rating : 50V(DC).  
Current Rating : 0.5A .  
Contact Resistance: 30 m OHM MAX.  
Insulation Resistance: 500M OHM MIN.  
Withstanding Voltage: 500V (AC) RMS for 1 Minute  
Temperature Range : -40°C TO 85°C  
Terminal Retention Force : 3.0 N MIN.  
Fitting nail Retention Force: 1.0N MIN.
- ORDER INFORMATION**  
SFPC- 101V- XX 10  
NO. OF PINS (SEE TABLE 1)

# CUSTOMER DRAWING



UNLESS OTHERWISE SPECIFIED		APPROVAL		DATE	
TOLERANCES		DRAWN		SUN HY	
U.S.		CHECKED		C LOKE	
METRIC		CHECKED		01/18/05	
.XX	+/-	DRAWING FILE :			
.XXX	+/-	ANGLE OF PROJECTION			
.XXX	+/-	REMOVE SHARP EDGES			
ANGLES +/-	2°	TITLE			
FOR MATERIALS AND FINISHES		FPC 1.0mm PITCH, VERT.			
SEE NOTES		BOTTOM CONTACT, SMT			
DIMENSIONS		SIZE		DRAWING NO.	
U.S.—		A3		SFPC-101V-XX10	
(METRIC)		SCALE		NONE	
		SHEET		1 OF 1	

Amphenol

REVISIONS		DATE	APPROVED
SYM	ECN	DESCRIPTION	
A	---	FIRST RELEASE	01/18/05 CL LOKE