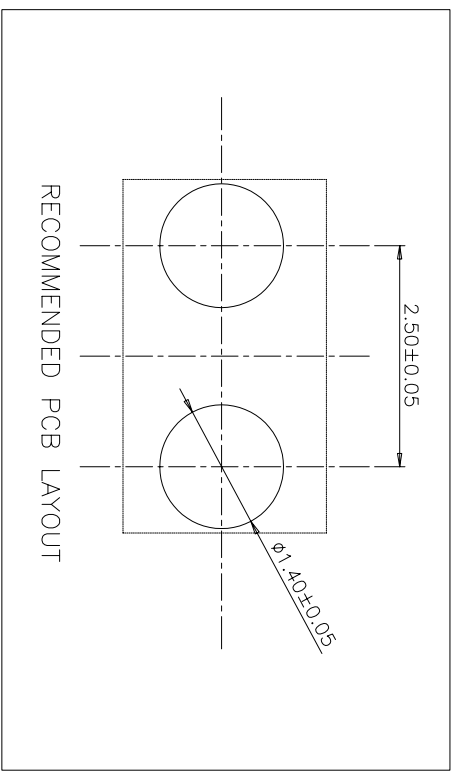
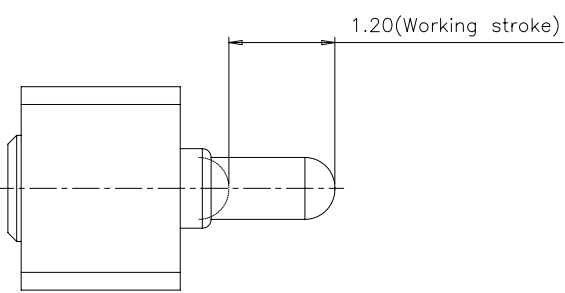
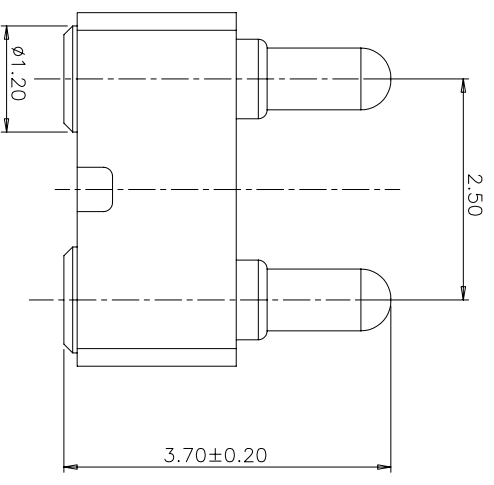
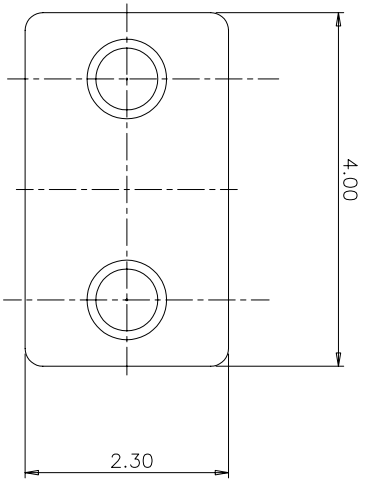
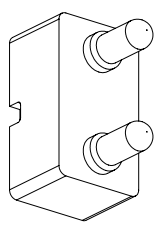


This document is the property of Amphenol Corporation and is loaned on a non-exclusive basis to the recipient for use in connection with the recipient's business. The recipient shall not make any copies or modifications to this document without the prior consent of Amphenol Corporation. Amphenol Corporation shall not be held responsible for any errors or omissions in this document. All dimensions are in millimeters unless otherwise specified.



REVISIONS		DATE	APPROVED
SYM	EON		
A	INITIAL RELEASE	09/30/04	C LOKE



SCALE 1:2

Materials:

- Housing: LCP 30%GF or equivalent
- Plunger: Brass, Ni flash underplating, Gold plated 10u"
- Barrel: Brass, Ni flash underplating, Gold plated 10u"
- Spring: SUS304

Mechanical Characteristics:

- Operating Power of Pin
- Full Stroke: 1.4mm
- Spring Force: 120g±20% at 1.20mm stroke

Electrical Characteristics:

- Contact Resistance: 50mOhm Max
- Current Rating: 1A
- Voltage Rating: 12VAC (rms)/DC

CUSTOMER DRAWING

UNLESS OTHERWISE SPECIFIED TOLERANCES		MATERIAL AND COLOR		APPROVAL		DATE		TITLE	
U.S. METRIC				DRAWN		V SOH 09/30/04		Amphenol	
X	+/-		0.20	CHECKED		C LOKE 09/30/04		Amphenol East Asia Limited Manufacturing Operation	
.XX	+/-		0.10	DRAWING FILE :				2 PIN POGO, 2.5MM PITCH	
.XXX	+/-		0.05	ANGLE OF PROJECTION				SIZE DRAWING NO. REV.	
X.	+/-		1*	FINISHES				A4 SPGA-1225-20 A	
DIMENSIONS				FINISHES				SCALE SHEET 1 OF 1	
U.S. (METRIC)		INCHES (MM)							